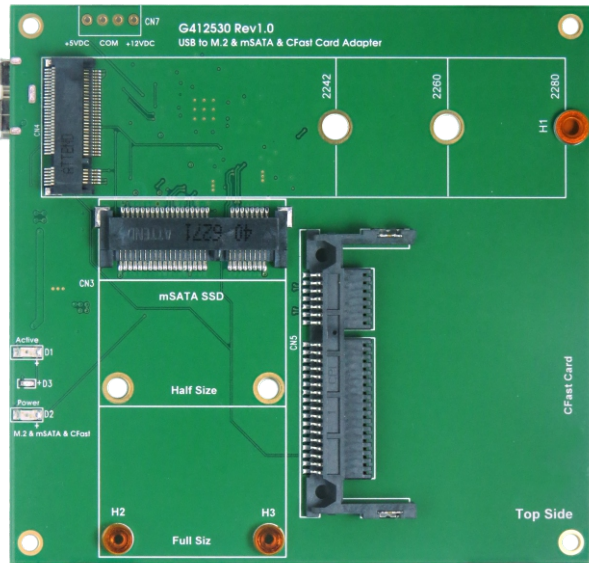


3 IN 1

USB 3.1 micro B for mSATA & M.2 & CFast



Features

- Build in ASM1351 USB3.1 high performance processor
- Build in Mini PCI-e Female connector
- Build in M.2 NGFF Female connector
- Build in CFast Female connector
- PWM synchronous buck converter Power IC
 - ※3A maximum output current
 - ※Short circuit protection
 - ※In-rush current suppression
 - ※Thermal shutdown protection
- ESD HBM (Human Body Mode)/2KV
- D2 Green LED on indicates CFast, or mSATA, or M.2 Power ready
- D1 Red LED Blinking indicates SSD active status

Specifications

- Compliant with USB3.1 Specification Revision 1.0
- Support UASP and Mass Storage Class Overview Rev1.4
- Support SATA Reversion 3.2
- Compliant with PCI Express M.2 Specification Version 1.0
- PCI Express Mini Card Electromechanical Specification 1.2

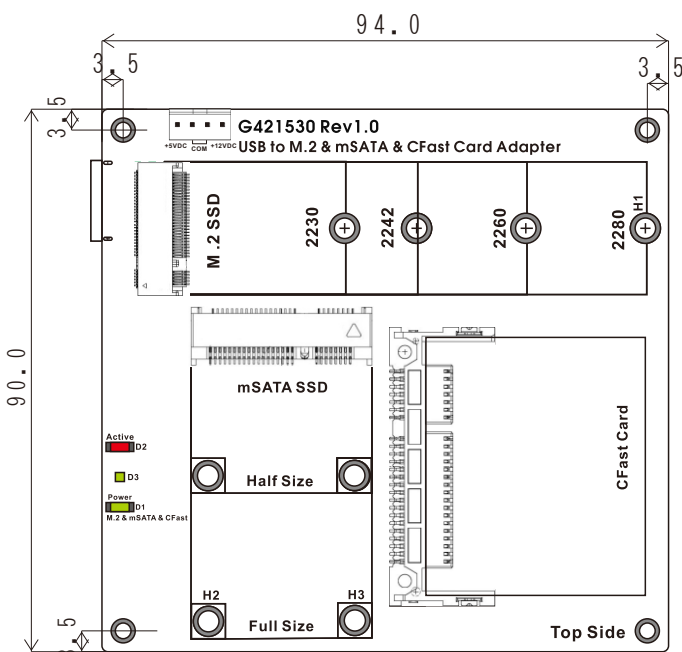
Support M.2 M-key Form Factor

- Type 2280-D2-B-M: 80mm(L) x 22mm(W)
- Type 2260-D2-B-M: 60mm(L) x 22mm(W)
- Type 2242-D2-B-M: 42mm(L) x 22mm(W)
- Type 2230-D2-B-M: 30mm(L) x 22mm(W)

Support mSATA SSD Form Factor

- Full size: 50.95 mm (L) x 30mm (W)
- Half size: 26.8 mm (L) x 30 mm (W)

Notice: Cfast Card, or M.2 SSD or mSATA SSD, only one can work, M.2 SSD would be priority.



CFast

M.2
SATA I/F

mSATA

